



OFW1309

OIL FILTER WRENCH (PLIER TYPE)

- Hardened drop forged CR-V steel tool removes stubborn filters 60mm - 90mm
- Slip joint design makes adjustment fast and easy.



OFW1310

OIL FILTER WRENCH (PLIER TYPE)

- Hardened drop forged CR-V steel tool removes stubborn filters 85mm - 115mm.
- Slip joint design makes adjustment fast and easy.



OFW1371

OIL FILTER WRENCH (CHAIN TYPE)

- All drop forged of line quality.
- Range : 45-140mm
- Length : 6" (150mm)



OFW1372

OIL FILTER WRENCH (CHAIN TYPE)

- All drop forged of line quality.
- Range : 50-200mm
- Length : 8" (200mm)



SW1373

OIL FILTER WRENCH (STRAP TYPE)

- Fits filters with a diameter of 25mm to 160mm.



OFW1374

60-160MM OIL FILTER WRENCH (CHAIN TYPR)

- Available for all type of oil filter.
- Double-hinge construction for high clamping power.
- Flexible handle for narrow space.
- Size: 60-160mm
- Length of chain : 520mm



*Picture shown are for reference only



OFW5000

TWO WAY OIL FILTER WRENCH

- Removes all oil filter from 2-1/2" to 4" in diameter.
- Use with 1/2"dr ratchet.
- Size : range 2-1/2" - 4" (63-102mm)



OFW5300

TWO WAY OIL FILTER WRENCH

- 3 Legs and two way.
- With 3/8" & 1/2"DR or use with 21mm wrench.
- Size : 2-9/16" - 4-3/4" (65 - 120mm)



TWO WAY OIL FILTER WRENCH

- This tool is removable and reinstall.
- The serate design makes forged in place.
- Use with 1/2"DR or 21mm wrench.

Item Code	Range (mm)
OFW3142	60 - 80mm
OFW3144	80 - 110mm
OFW3146	110 - 145mm



OFW3148

120-140MM TWO WAY OIL FILTER WRENCH

- This tool is removable and reinstall.
- The serate design makes forged in place.
- Use with 1/2"DR or 21mm wrench.
- Range : 105mm- 145mm (H 62mm)



HEAVY DUTY OIL FILTER WRENCH FOR TRUCK

- Wider band for a better grip of filters.
- stronger anchor plate for removal of excessively tight filters.
- Designed for high torque requirements.
- Not designed to be used with power tools.

Item Code	Range
OFW105125	105-125mm
OFW120140	120-140mm



OFW6420

OIL FILTER WRENCH (STEEL BELT TYPE)

- Range up to 6"(150mm)
- Strong nylon belt will not slip.



OIL FILTER WRENCH

Item Code	Length
OFW100	55-75mm
OFW200	75-95mm
OFW300	95-115mm



LPFW10

LOCKING PLIERS FILTER WRENCH (10")

- Chrome-vanadium steel made.
- This plier can be adjusted and fastened for application at any angle.
- Suitable for installing, removing and tightening objects of any shapes.
- Jaw opening : 2-1/8" to 4-5/8" (53mm - 108mm)



STANDARD STEEL FILTER WRENCH

- Stainless steel sturdy and durable mirror surface adjustable oil filter wrench for vehicle.

Item Code	Length
OFW100SS	55-75mm
OFW200SS	75-100mm



OFW1378

DOUBLE CHAIN OIL FILTER WRENCH

- Special double chain design for removing and installing oil filter in powerful.
- Operation range : Ø 60-115mm.
- 1/2" Drive.



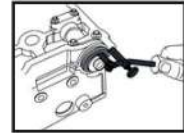
JP2266 JASONLINE TUBE PLIER

For removal and replacement of the connecting on the fuel filter.
Use the special jaws to pull the connector backwards to remove the connector.
Application : BENZ, FORD, MAZDA, VW, AUDI, OPEL, FIAT, GM BMW



SP6227 SEAL PULLER

- Engage the adjustable hook behind the seal.
- Brace the push rod against the engine head then push the handle to remove the seal.
- Remove the seal easily & Quickly without damage to the cam & crank shaft.



SPP6230 SPARK PLUG PLIER

- The spark plug socket pliers is specially designed for removing hard to reach high voltage lead wire.
- Good insulated handle and the grooves avoid any sliding down in operation, especially on Mercedes-Benz.



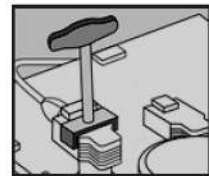
HTC6615 SPARK PLUG HOLE THREAD CHASER

- Double ended for both 14mm & 18mm threads.
- Cleans the threads in spark plug hole.
- Use with deep socket.



SPPS04 4PCS SPARK PLUG PULLER SET

- Suitable for installation/removal of ignition coils on VAG vehicles.
- Long shafts with composite T-style handle for added control and stability.
- Prevents damage to ignition coils whilst allowing faster removal.



US6222 UNIVERSAL SEPARATOR

- Multi-purpose puller set for balancer, pulley & gear.
- Application : FORD, TOYOTA, LEXUS GS 300 (1999-2004)



PIW6600 POWERBAR HAND IMPACT WRENCH

- Remove and replace harmonic Balancer Pulleys. Up to 600ft/lb of torque. Applications include pulleys. Flywheels. Couplings. flanges. Lawn mower base plate.etc.



*Picture shown are for reference only



DG1008 DIAL GAUGE

- This JIS standard light weight and compact dial indicator is made for precision and durability. It is shock-proof.
- Specifications.
 - Range : 10mm
 - Graduation : 0.01mm
 - Reading : 0~100[†]



MB1001 MAGNETIC BASE

- For holding dial indicator and other measuring instruments equipped with On / Off switch control
- Specifications.
 - Size : L64mm x W50mm x H54mm
 - Arm Length : 173mm / 165mm
 - Weight : 1.5kg



SE6024 STRAIGHT EDGE

- Great stability with 5/8" width, 1-3/8" height and 20-1/2" length. Convenient hanging hole and edge protector.
- Use with feeler gauges to check for distortion in engine blocks, cylinder heads and fly wheels.



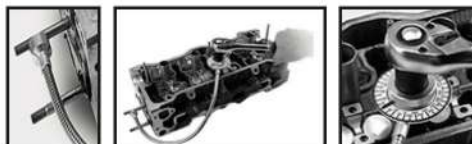
ATG6814 ANGLE TORQUE GAUGE

- Measures angle of rotation after pre-torque load in torque-angle applications.
- 360 degree scale clearly marked in 2 degree increments & in intervals of 10 & 30.
- Easily zero the gauge by turning housing for next application.



MATG6816 MAGNETIC ANGLE TORQUE GAUGE

- Surface scale is 360^o, minimum is 2^o. It can be set by right of left.
- Flexible hose can be used in curve space, all length is 418mm. It has a powerful magnet in front and easy to fix on every position.
- Operated by 1/2" wrench will be more convenient owing to appropriate distance between axle center and scale plate.



**Picture shown are for reference only*



RT1018A RADIATOR PRESSURE TESTER

- According to the type of car , choose a suitable adaptor and screw it in the inlet of radiator then have the manual pump pressure increases to 15-20psi and stay the level 5-10 minutes for checking.
- Before using no.2 universal adaptor, be sure to clear up the inlet of the radiator then check its size & chose an appropriate rubber ring to fit then screw secure It to the inlet of the radiator.
- Specification
 - 0 : Needle Thermometer
 - 1 : Manual pump with quick joint & release valve
 - 2 : Univesal adaptor with 3 rubber rings (used for cars not listed on No.3-5)
 - 3 : Japanese R123 Adaptor-suitable for benz, GM (buick) & Jeep
 - 4 : Japanese R123 adaptor-Suitable for Peugeot, Subaru, Chrysler, Acure, GM [Nova, spectrum & Sprint) Mitsubishi, Nissan, Mazda, Toyota, Infiniti Geo, Suzuki, Isuzu & Ford.
 - 5 : Japanese R125 adaptor-suitable for Honda, Toyota, Suzuki, Mitsubishi



RT1018 RADIATOR PRESSURE TESTER

Specification

- 0 : Temperature
- 1 : Pressure Testing Pump With Gauge
- 2 : GM (cadillac)
- 3 : Mercedes, GM (Buick), Jeep
- 4 : Peugeot, Subaru, Chrysler, Acura, GM(Nova, Spectrum, Sprint), Mitsubishi, Nissan, Mazda, Toyota, Infiniti, Geo, Suzuki, Isuzu, Mercedes
- 5 : Honda, Toyota, Suzuki, Mitsubishi, Chrysler, Acura
- 6 : Mercedes (ML-Class), GM (Achiva, Skylark, Gramd Am-1992~2002) Vehicle
- 7 : Volvo, Saab, Sterling, Citroen, Renault, Fiat, Alfa, Jeep
- 8 : VW (Vento, T4, Passa-1996, Golf, Beetle, Sharan)
- 9 : Audi(A4, A5, A6), BMW345, VW(Passa-1997~2002), Porsche(Cayenne)
- 10 : BMW
- 11 : Audi, VW
- 12 : Mondeo, International, Land Rovar, Opel, Jaguar, Ssang yong, Motor, BMW60
- 13 : Mercedes (C-class, E-class, S-class)



RT1017A RADIATOR PRESSURE TESTER

Specification

- 0 : Temperature
- 1 : Pressure Testing Pump With Gauge
- 2A : Connector R123/R124 (Black Colour)
- 2B : Connector R123/R125 (Blue Colour)
- 3 : Mercedes Benz (W123, W126, W124, W201) GM(Buick) Jeep
- 4 : Peugeot, Subaru, Chrysler, Acura, GM(Nova, Spectrum, Sprint) Mitsubishi, Nissan, Mazda, Toyota, Infiniti, Geo, Suzuki, Isuzu, Mercedes
- 5 : Honda, Toyota, Suzuki, Mitsubishi, Chysler, Acura
- 6 : Mercedes Benz (ML-class, W162, W164) GM(Achiva, Skylark, Gramd, Am- 1992~2002) Vehicles
- 7 : Volvo, Saab, Sterling, Citroen, Renault, Fiat, Alfa, Jeep
- 8 : VW(Vento, T4, Passa-1996, Golf, Beetle, Sharan)
- 9 : Audi (A4, A5, A6), BMW345, VW(Passa-1997~2002), Porsche(Cayenne)
- 10 : BMW (E46, E36, E34, E39, E38, E32, E90)
- 11 : Audi, VW
- 12 : Mondeo, International, Land Rover, Opel, Jaguar, Ssang Yong Motor, BMW E60
- 13 : Mercedes Benz (C-class, E-class, S-class, W140, W220, W124, W210, W211, W215, W216, W221, R230)
- 14 : Mondoe, Focus, C-Max03
- 15 : Mazda M3, Volvo (New Model)



RADIATOR LEAKAGE TESTING ADAPTOR

Item code	Applicable
RT1017-17	BMW E60, E65, E81, E88, E87
RT1017-18	VW SHARAN 1.8T, 2.8, BENTLEY
RT1017-19	TOYOTA-RAV4. PREVIA
RT1017-20	SAAB
RT1017-21	FORD, JAGUAR, OPEL, LAND ROVER, BUICK, BENZ (M-CLASS)
RT1017-5	MAZDA, HONDA, ISUZU, LEXUS, TOYOTA, SUZUKI...ETC
RT1017-4	SUBARU, BENZ, PEUGEOT, TOYOTA, KIA, HONDA...ETC
RT1017-3	JEEP, CHEVROLET, BENZ

*Picture shown are for reference only



UPS5566 UNIVERSAL PULLER SET

- With pulling legs for narrow spaces in different lengths.
- Particularly well suited to be hung up on workshop walls
- All required clamping depths available at any time.
- Size: Width: 130mm
Arms Height: 100, 200, 250mm/2pcs



UPS5568 SPECIAL TRIPLE -ARM PULLER SET

- With pulling legs for narrow spaces in different lengths.
- Particularly well suited to be hung up on workshop walls.
- All required clamping depths available at any time.
- Beam 3-Arm x 1pcs
- Beam 2-Arm x 1 pcs
- Spindle x 1 pcs
- Pair of Clamps short (for 3 hooks)
- Pair of Clamps middle (for 3 Hooks)
- Pair of Clamps long (for 3 Hooks)
- Hooks (extremely tight) x 9 pcs



ASS1522 22PCS COMPLETE KIT FOR BOSCH & DENSO TYPE ALTERNATOR PULLEYS

Contents:

- 3-Combined Socket for Alternator T50 x 113mmL Socket; M10 x 113mmL Socket; 3/8" Dr.xM10x80mmL W/ø14x33T for fiat.
- 1-Bit socket M10x140mmL.
- 3-Tenth Socket: 15mmx19mm HEX x 33 tenth; 22mm HEX x 33 tenth, 15mm x 17.50mm Hex x33 tenth.
- 2-22mm HEX Socket 17mm HEX Socket.
- 3-22x28 mm Hex socket 21x28mm Hex socket.
- 1-35mm Round Socket W/4 pins.
- 1-38mmHex W/3pins.
- 1-1/2" Dr.SQ(F)x 10mm Hex (F) Bits Adaptor.
- 1-M10xH12x64L bit.
- 6-10mm(hex Shank) x 75mmL CR-V bit: T40,T50,M8,M10,H8,H10.

Features:

- Removes and installs press-on-type belt drive accessory pulleys.
- Works with hand tools or an impact gun.
- Interchangeable components to work on VW, Audi, Seat, Mercedes Benz, Renault, BMW, Ford Renault, Fiat Renault, Fiat, etc....



MV400 DIGITAL INSPECTION VIDEOSCOPE

- Records and plays back still images and video clips
- 3.5" high resolution full color LCD display (320x240)
- Easy-to-use, multi language interface
- Wide camera angle for images with 640x480 resolution
- With optional removable Mirco SD Card, saves images and video to take with anywhere
- On-screen horizontal/ vertical reverse
- 5x digital zoom for increased viewing
- Mini USB connector for uplading images and videos to a computer
- Narrow probe diameter available in either 8.5mm (0.33") or 5.5mm(0.22") and fits most spark plug holes
- White LED to illuminate the inspection area, with illumination control
- Views objects as close as 1"
- Oil and scratch resistant tempered glass lens
- 1M (39.4") semi-rigid, but flexible waterlight shaft
- Built-in rechargeable Li-ion battery with up to 3-4 hours of continuous use
- Ergonomic and durable tool housing

**Picture shown are for reference only*



FHC6630 FLUID HOSE CLAMP

- Use five of these tools to clamp each brake line & the master cylinder simultaneously, this allows a speedy overhaul with minimum loss of fluid & subsequent line bleeding.
- Seals flexible brake and fuel lines.
- Smooth rounded edges to ensure no damage to the internal reinforcement of hydraulic brake lines.

FHC6635 FLUID HOSE CLAMP



- Stop the oil flow and avoid damaging hoses.
- Adjustable for most kinds of flexible hoses, particularly for brake, fuel or cooling system hoses.
- Length 310mm; extension hose clamp helps repair work.
- Maximum application : 25.4mm



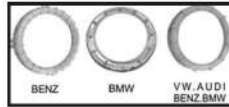
BMB6533 ADJUSTABLE FUEL TANK LID REMOVER

- To adjust from the middle track.
- You can use on all kinds of vehicle with salient fuel tank lid.
- Applicable: Benz, BMW, European cars, etc.



BMB6535 ADJUSTABLE FUEL TANK LID REMOVER

- Jaw adjustable range : 122 - 199mm , suitable for different fuel tank lid.
- Special jaws design to remove & install the tank closely.
- Use with 3/8"DR Wrench



FTW3009 WAJA / VOLVO FUEL TANK LID



FTW3008 9 POINT FUEL TANK LID TOOLS (TOYOTA / HILUX)

- Special designed to remove and install the fuel tank lock rings for most TOYOTA and LEXUS.

• 24Pt x 1/2"Dr

Application Range :

- TOYOTA : COROLLA, LAND CRUISER, MATRIX, TACOMA, YARIS S, YARIS BASE, VIOS.
- LEXUS : RX330, RX350, RX450H
- TOYOTA fuel pump gauge retainer : 77144-04010, 77144-52040
- LEXUS fuel pump gauge retainer : 77144-48020
- COROLLA : 2004~2014 CE, CEO, ECOSW, LE, S, S TD, XR, XRS
: 4Cyl 1.8L, 4Cyl 2.4L
- LAND CRUISER : 2008~2014 ; 8Cyl 5.7L
- MATRIX : 2004~2014 CE, LE, S TD, XR, XRS ; 4Cyl 1.8L, 4Cyl 2.4L
- TACOMA : 2005~2014 ; 4Cyl 2.7L, 6Cyl 4.0L
- YARIS S, YARIS BASE : 2007~2011 ; 1.5L L4
- VIOS : 2014~
- LEXUS RX330 : 2004~2006 ; 6Cyl 3.3L, 6Cyl 3.5L
- LEXUS RX350 : 2007~2014 ; 6Cyl 3.3L , 6Cyl 3.5L
- LEXUS RX450H : 2010~2014 : 6Cyl 3.5L

*Picture shown are for reference only



BTK6850

BELT TOOL KIT FOR ELASTIC-RIBBED BELTS

- Suitable for engines with elastic ribbed belts such as Alfa Romeo, BMW, Chrysler, Fiat, Ford, Mercedes, PSA, Seat, Skoda, Smart, Volvo, VW-Audi, etc...
- This tool set is quickly and easily removal and installation of the new elastic ribbed belts required.



PR6292

CHANGEABLE TWO JAWS PULLEY REMOVER

- Suitable for using when the space limited.
- To change the parts easily for fitting the different cars.
- Jaw length : 72/95mm
- Jaw depth : 18mm, Width : 4.4mm.



CSGK6614

CARBURETOR SYNCHRONIZER GAUGE KIT

- For testing fuel pump carburetor and transmission check auto with 2~4pcs carburetors.
- Contents :
 - * 4pcs 3-1/2 synchronize gauges with fixed plate
 - * 4pcs rubber hose 8 x 5 x 750mm
 - * 4pcs extension tube 3.9 x 52mm
 - * 4pcs extension tube 3.9 x 122mm
 - * 8pcs cone type connector 8 x 40mm
 - * 4pcs adapters 10 x 53mm (M6 x 0.75)
 - * 4pcs adapters 10 x 60mm (M6 x 1.0)



FTSS3025

FUEL TANK SENDER SPANNER SET

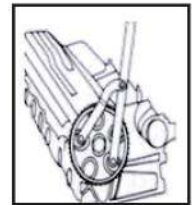
- Universal application of 247mm Driver:
- For Removing and replacing the plastic Retaining Ring on the Sender unit on fuel Tanks
- Include : 5 Series of extension, that include for PSA and Renault models.
- Range for : Min 70mm to Max 170mm



PH6264

UNIVERSAL PULLEY HOLDER

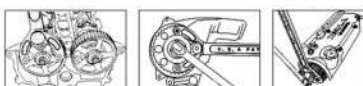
- This set is designed to removes and installs fan clutch & hold the camshaft pulley.
- Use for most of the cars.
- Contents with different tap to fit any cars and pin width can adjust.
- Can adjust different width from 40m/m to 220m/m.
- Size available : Ø6m/m-Ø10m/m, Ø8m/m-Ø11m/m, Ø10m/m-Ø12m/m, Ø11m/m-Ø16m/m



PH6266

UNIVERSAL PULLEY HOLDER

- Especially for holding the pulley screw hole and avoid free turn from the pulley and bolt.
- Work in the situation when replace the pulley bolt.
- Available for universal engines ; suitable working for
 - Camshaft Pulley
 - Crankshaft Pulley
 - Fan Pulley
 - Idle Pulley
- Provide 8 Adaptor With four sizes to fit pulley screw sizes.
- Special product advantages.
- Adjustable jaw provides automatically lock of pulley.
- Considerable blue handle coating design provides better holding by users.



*Picture shown are for reference only