



TSS1205 5PCS TWIST SOCKET SET

- This socket set is a tool and it is specially designed for loosening a nut which can not be done by a socket or wrench.
- This tool is only useful for a nut with positive threads.
- This tool can be also used while a nut could not be loosen in a normal way because of rust and deformation.
- This socketset is made of SNCM439 with HRC 50-53 hardness.
- Size : 17,19, 21, 22mm & Bar



TSS1212 12PCS TWIST SOCKET SET

- Use on the damaged screw and nuts.
- Special spiral design for easier to remove the damaged screw.
- The deep design for easier use on the tire screw.
- Size : 3/8"dr - 8mm, 10mm, 12mm & 13mm (Length 32mm), 1/2"dr - 14mm, 15mm, 16mm, 17mm, 19mm & 21mm (Length 34mm)
- 2pcs pin punches 72.80mm



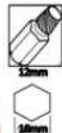
TSS1210 10pcs TWIST SOCKET SET

- Use on the damaged screws & nuts.
- Special spiral design for easier to remove the damaged screws.
- Hex design for deep hut of shaft.
Size : 8mm, 10mm, 11mm, 12mm, 13mm, 14mm, 15mm, 16mm, 17mm, & 19mm



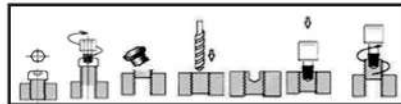
SRS6608 STUD REMOVAL / INSTALL SET

- Allows removal and installation of studs without damaging threads.
- Allows tightening and torque without compromising thread integrity.
- Industrial quality steel construction with black oxide finish for longer tool life.
- Comes with durable, protective carrying case to keep pieces from getting lost.
- Comes with 6mmx1.0, 8mmx1.25, 10mmx1.50 stud installers.



SES1515 SCREW EXTRACTOR

- Use with either a spanner or socket.
- Special short length for use in a restricted space.
- Hammer this tool into damaged screw and reverse to remove the screw.



TRK5201 WHEEL STUB THREAD RESTORER KIT

- Unique design allows for the two halves of the thread restorer to be fitted on the good thread and wound back over the damaged thread normally at the end of the stud.
- Traditional thread restorers rely on luck for the restored and undamaged threads to align.
- Capacity : M12x1.25, M12x1.5, M14x1.5 for small vehicle.





PPS 5588

6PCS PIN PUNCH SET

- Size: 2, 3, 4, 5, 6, 8mm
- Material: high quality chrome-molybdenum steel
- Steel case

Item Code	Length
PP02	150mm
PP03	150mm
PP04	150mm
PP05	150mm
PP06	150mm
PP08	150mm



CPS5599

6PCS CHISEL & PUNCH SET (BOX TYPE)

- 1pcs 4mm x 120mm Centre Punch
- 1pcs 3mm x 120mm Taper Punch
- 1pcs 5mm x 125mm Cross cut Chisel
- 1pcs 12mm x 125mm Cold Chisel
- 1pcs 16mm x 150mm Cold Chisel
- 1pcs 4mm x 150mm Pin Punch



CS6062

CHISEL SCRAPER

- The stainless steel blade is designed with a chisel edge.
- Width of blade : 1-1/4" (30mm)
- Full tang construction. Heat-treated. Precision ground. Mirror finished.
- Overall Length : 8" (200mm)



ACP101H

AUTO CENTRE PUNCH

- Punches, marks, scribes and starts drill, nail or screw holes
- One-hand spring impact operation, no hammer needed
- Ball bearing action
- Lightweight aluminum body with long wearing alloy steel parts
- Hardened steel point



HPS6009

9PCS HOLLOW PUNCH SET

- Cut holes in leather, paper, plastic, wood sheet and any other soft material.
- Hollow Punch : 2.5mm, 3mm, 4mm, 5mm, 6mm, 7mm, 8mm, 9mm & 10mm.



MT6199

MAGNETIC TRAY

- Two 3-1/4" Heavy duty magnets clamp to ferrous metal surfaces for strong holding power on the stainless steel tray.
- Holds tools & parts even works upside down.
- Size : 240mm x 140mm



*Picture shown are for reference only



AC09M
9" MADA AIR CHUCK



PG-M
MADA PRESSURE GAUGE

- 160 lb/in 2
- 10 to 160 psi /1 to11 kg



AC15M
15" MADA AIR CHUCK



PB1531
31" JUMBO PRY BAR

- Go though alloy steel square.
- Rugged firm grip designed plastic handle.
- Excellent for prying engine, cyclinder head, transmission cases, manifold and drive line components.



PBS04
4PCS PRY BAR

- 7/16" x 24"L (11.1mm x 609.6mm)
- 7/16" x 18"L (11.1mm x 457.2mm)
- 3/8" x 12"L (8.5mm x 304.8mm)
- 1/4" x 8"L (6.4mm x 203mm)



PBS05
5PCS PRY BAR SET

- 1/4" X 7-1/2" (6.4mm x 190.5mm)
- 3/8" x 11" (8.5mm x 279.4mm)
- 7/16" x 17" (11.1mm x 431.8mm)
- 1/2" x 24" (12.7mm x 609.6mm)
- Rolling Bar : 16" (406.4mm)



MPUT6128
MAGNETIC PICK UP TOOL

- Flexible shaft bends & holds in all position
- Long & slender shaft for easy access to cinfined areas.
- Comfort-grip handle.m)



SR6284

1/2" DR STUB REMOVER

- Welded body and made of middle carbon steel.
- Capacity : 1/4" to 3/4", available in metric sizes.



CAST STEEL SWIVEL BENCH VISE

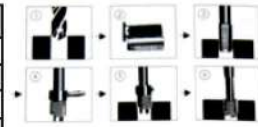
Item Code	Jaw Width	Max. Opening	Weight
BV3004	4"	4"	7.5kgs/8.3kgs/0.4'
BV3005	5"	5"	11kgs/12kgs/0.6'
BV3006	6"	6"	14.5kgs/16kgs/0.8'
BV3008	8"	8"	20.5kgs/22kgs/1.2'



THREAD REPAIR KIT

- Each set contents twistdrills, breaking pintool, screw top and intallation tool.

Item Code	Spec.	Length
TRK0508	M5 x 0.8	5.3mm
TRK0610	M6 x 1.0	9mm
TRK08125	M8 x 1.25	9mm
TRK10125	M10 x 1.25	11mm
TRK10150	M10 x 1.50	11mm
TRK12125	M12 x 1.25	13mm
TRK12150	M12 x 1.50	13mm
TRK14125	M14 x 1.25	14.6mm
TRK14150	M14 x 1.50	14.6mm



STAINLESS STEEL HOSE CLIP

Item Code	Size	Spec
SSHC01	1"	13mm - 26mm
SSHC011/2	1-1/2"	21mm - 38mm
SSHC011/4	1-1/4"	16mm - 32mm
SSHC02	2"	32mm - 51mm
SSHC021/4	2-1/4"	38mm - 57mm
SSHC03	3"	57mm - 76mm
SSHC3/4	3/4"	10mm - 19mm
SSHC5/8	5/8"	5.6mm - 16mm
SSHC7/8	7/8"	10mm - 23mm



TDS40T

40PCS TAP & DIE SET

- Contents :
- 34pcs - Tap And Die:
 - M3x0.5, M3x0.6, M4x0.7, M4x0.75, M5x0.8, M5x0.9, M6x0.75, M6x1.0, M7x0.75, M7x1.0, M8x1.0, M8x1.25, M10x1.25, M10x1.5, M12x1.25, M12x1.75 & 1/8NPT27
- 1pcs Tap Wrench (m3-m12)
- 1pcs "T" Type Tap Wrench
- 1pcs Die Stock 25mm
- 1pcs Screw Driver
- 1pcs Screw Pitch Gauge
- 1pcs Blow Case



TC6778

UNIVERSAL OUTSIDE THREAD CHASER

- Precision dies restore threads to their original conditions.
- Eliminates the need for expensive thread cutting equipment.
- Tighten the tool slightly on the goods threads, then back off over the damaged thread area to restore the threads.
- Capacity : mm 1.0, 1.25, 1.5, 1.75, 2.0, 2.5, 3, 3.5



*Picture shown are for reference only



HPS6420

5PCS HOOK & PICK SET

- Stainless steel points.
- Set contains sawl, hook tool, 45 degree & 90 degree bent tool.
- Use for detail works and scricing, picking jobs.



HPS06

6PCS EXTRA LONG HOOK & PICK SET

- Includes : Straight pick, 90 Pick, Double angle pick, Complex pick, and Hook pick.
- Perfect for removing fuses and O-rings.
- Ideal for separating wires.
- Black finish carbon steel, Soft anti slip grips.
- 240mm long including the handle.



CSS6063

3PCS CHISEL SCRAPER KNIFE SET

- Size : 15mm, 20mm & 30mm
- Stainless steel, heat treatment of knife.
- High grade wooden grip.
- Sharp tip.



HRS3005

5PCS HANDY REMOVER SET

- For plastic upholstery fastener.
- Place tool under edge of door panel and into fastener as fast as possible, then simply pry up.
- Large support are to protect clips and pad.



HRS3006

6PCS HANDY REMOVER SET

- Special designed with an extra slim profile and unique shape for the delicate task of fine fascia trim and bezels.
- Make from impact resistant high nylon to prevent scratch or mar fascia like metal tools made.
- Applicable : air vents, door panels, door locks, electronic, seat controls, levers, center counsels, gear shifthers, etc. ...



ORK407 & ORK419

O-RING KIT (INCH & MM)

- Material Buna -N passed ASTM Oil # 1 & # 3 Lab test
- Perfect for all auto, trucks, tractors, farm/heavy equipment, plumbers & even hydraulic repair.
- Includes 32 most commonly used sizes in one carrying case.
- **Specifications**
 - Available Int'l Standard Inch Size
 - No: Prom 001-475
 - Standard metric size: 1mm-10mm
 - O-Ring Cords Size available :2-20mm (100mm/Roll)



FTK6201

HYDRAULIC FLARING TOOLS KIT

Specifications

- Auto Repair Tools
For flaring tube of GM fuel line, brake line, transmission line and A/C line.
- Auto Repair Tools
- This flaring kit includes various sizes of dies and adapters to work on flaring tube of GM fuel line, brake line, transmission line and A/C line.
- One 45 degree adapter is suitable for working a double flare.
- A big handle on the hydraulic pump helps save energy.
- The set is packed with a case for easier and safer storage for dies and adapters.
Material: alloy steel.



TRK14SPS

M14X1.25 SPARK PLUG THREAD REPAIR KIT

Introduction:

- This tool is designed for repairing stripped or damaged threads on spark plug seat.
 - Tap (M14*1.25p)
 - Step-Tap (M14*1.25P; M15.8*1.25P)
 - Wrench (ID:3/8")
 - T-bar (3/8")
 - Insert drive (ID:3/8")
 - Seat cutter
 - Insert (L:15mm & L:9.4mm)
 - Alley Key 2.5mm (For No.3 Wrench)



CPS555

555PCS CONTTER PIN ASSORTMENT

Contents:

- 1.6 x 25mm - 210pcs
- 2.4 x 25mm - 150pcs
- 2.4 x 38mm - 100pcs
- 3.2 x 32mm - 50pcs
- 3.2 x 50mm - 30pcs
- 4.0 x 64mm - 15pcs



SNS300

300PCS SNAP RING SET

- 18 Popular Sizes (Inner Diameter)
 - 3mm : 20pcs
 - 4mm : 10pcs
 - 5mm - 15pcs
 - 6mm : 25pcs
 - 8mm : 15pcs
 - 9mm : 20pcs
 - 11mm : 15pcs
 - 12mm : 15pcs
 - 13mm : 25pc
 - 14mm : 15pcs
 - 16mm : 20pcs
 - 19mm : 25pcs
 - 20mm : 15pcs
 - 22mm : 20pcs
 - 25mm : 15pcs
 - 26mm : 15pcs
 - 28mm : 10pcs
 - 32mm : 5pcs



SS200

200PCS SPRING SET

- Extended Springs :
 - 7x1.25mm 10pcs
 - 5.5x25.5mm 10pcs
 - 6.5x22mm 10pcs
 - 8x28.5mm 8pcs
 - 8x31.5mm 10pcs
 - 8.5x47mm 12pcs
 - 8x44.5mm 12pcs
 - 7x51mm 12pcs
 - 4.5x44.5mm 8pcs
 - 7x38mm 10pcs
 - 8.5x36.5mm 10pcs
 - Compressed Springs:
 - 7x1.25mm 10pcs
 - 6.5x10mm 10pcs
 - 5.5x17mm 10pcs
 - 9.5x16mm 6pcs
 - 9.5x19mm 12pcs
 - 4x79.5mm 12pcs
 - 9x35mm 8pcs
 - 5.5x38mm 10pcs
 - 7x19mm 10pcs

*Picture shown are for reference only



TLB6650B

26" TYRE LEVER BAR (BENCH)

- Special bend design to use in recessed areas, when come off the tyre and drive shaft etc.
- Material:CR-V
- Length:650mm



TLB6650S

26" TYRE LEVER BAR

- Special bend design to use in recessed areas, when come off the tyre and drive shaft etc.
- Material:CR-V
- Length:650mm



TLB530

21" TYRE LEVER BAR

- Special bend design to use in recessed areas, when come off the tyre and drive shaft etc.
- Material:CR-V
- Length:530mm



TLB3324

24" TYRE LEVER BAR

- Front flat 90° design to come off the drive shaft
- Material:CR-V
- Length:600mm

ROTARY BURR

G061606 

C102006 

F102006 

G102006 

F122506 

H082006 

E122006 

L102506 

L061606 

B102006 

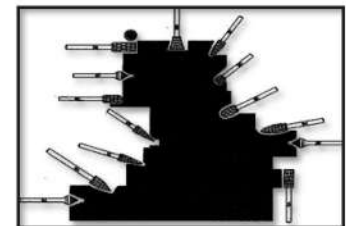
G102506L 

L102006L 

F102006L 

C102006L 

E101606L 



*Picture shown are for reference only



PSC11
DISPOSABLE SEAT COVERS

- Perforated on roll 50/pkt.
- Size : 870 x 775mm



SC1322
SEAT COVER

- Universal Size.
- Material : PVC



MFC1300
MAGNETIC FENDER COVER

- Heavy, long wearing foam vinvy.
- Protect the car.
- with three special magnetic in the cover.
- Material : PVC
- Size : 500mm x 875mm



MC6000
MECHANICS CREEPERS

- One-piece construction.
- Easy to clean surfaces.
- Resistant to solvents, grease and fuels.
- Size : 1000mm x 510mm x 90mm



MC6636
MECHANICS CREEPERS

- Design for 6 wheels to make it stronger.
- Easy and cosy to lie on the creepers.
- The creeper with foam inside and concave design to make you easy and cosy to lie on.
- Size : 1020mm x 430mm x 111mm



MC6342
42" MECHANICS CREEPERS

- Comfortable padded headrest.
- Large, ergonomically designed surface.
- Handle at the foot end for pulling and carrying.
- Load capacity up to 150kg.
- Size : 1050mm x 410mm x 95mm

**Picture shown are for reference only*



WB6009 **WORKBENCH**

- Strong Structure heavy duty workbench.
- Powder coating.
- Plus 3 drawer chest (ball bearing slide)
- Oil-resistant, acid-resistant, moisture-resistant, and anti-slip cutting board could be the worktop for workbench.
- Size : W1565mm x D766mm x H800mm



WB6010 **WORKBENCH W.BACKPANEL**

- Strong Structure heavy duty workbench.
- Powder coating.
- Plus 3 drawer chest (ball bearing slide)
- Oil-resistant, acid-resistant, moisture-resistant, and anti-slip cutting board could be the worktop for workbench.
- Size : W1565mm x D766mm x H1500mm



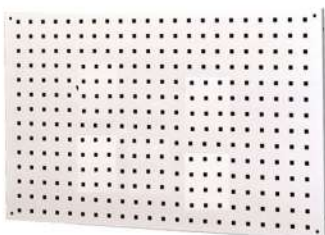
WB02 **TWO DRAWER WORKBENCH**

- Strong Structure heavy duty workbench.
- Powder coating.
- Plus 2 drawer chest (ball bearing slide)
- Size : W1524mm x D762mm x H864mm



SC03HD **SERVICE CART**

- Overall : H630 x W370 X L735



DB0204 **STEEL DISPLAY BOARD**

- Made of steel to make it stronger.
- Include special screw to fix the board.



ECR08

8 TON RAM (FOR ENGINE CRANE)

- Chrome-plated cylinder rod inhibits rusting, and corrosion.
- Larger diameter pump pistons for faster rising action.
- Designed with swivel handle provides fast engine removal and replacement from any directions.
- Capacity : 8 ton



GJ02L

2 TON LOW PROFILE GARAGE JACK

- Weight : 40kg
- 34" Extra Long chassis
- Height Range : 3" to 24 "
- Dual Pump for rapid lifting



GJ03C

3 TON GARAGE JACK

- Weight : 32kg
- 24" chassis



FLOOR TRANSMISSION PICK JACK

Model	FTJ0.5	FTJ1.5
Capacity	500 Kg	1.5 Ton
Height	200-670mm	230-890mm
G.W/N.W	58/50kg	83.5/73.5kg



ABJ2550

50/20TON AIR BUS JACK

- Capacity : 50/25T
- Air Pressure : 0.8 - 1.2 MPA
- Minimum Height : 210mm
- Lift : 460mm
- Rated Pressure :
- Net Weight : 60kg



EC02L

FOLDING ENGINE CRANE

- Length : 2300mm
- Width : 1300mm
- Height : 1575mm
- Lifting range : 25mm - 2383mm (1-93-3/4)
- Capacity : 2 Ton

*Picture shown are for reference only



500KG ENGINE SUPPORT BAR

- Straddling the inner fender walls and acting as a bridge to support engines,
- Adjustable in height and width to brige various vehicle fender walls and securely hold engine in place.
- Including slider bolt that can be positioned anywhere on the bar for the best weight distribution.

Item Code	Length
ESB500C	1510mm
ESB500T	1610mm



ES1250

1250LBS ENGINE STAND

- Accept a wide variety of engines and tranmissions.
- The head swivel 360 for accessibility to all part of the engine.
- Fully adjustable mounting arms.
- Swivel castors provide excellent manoeuvrability.



ES01

1 TON FOLDING ENGINE STAND

- Capacity : 2000 Lbs



TPJ500

TALL TRANSMISSION JACK

- Min height : 210mm
- Max height : 775mm
- Front tilt : 60
- Overall size : 950mm x 5480mm x 276mm
- Capacity : 500kg



TPJ500-02B

500KG 2 STAGE TALL TRANSMISSION PICK JACK

- Min Height : 855mm
- Max Height : 1770mm
- G.W : 82kg
- M.W : 75kg
- Capacity : 500kg



SB500

TELESCOPIC TRANSMISSION JACK

- Fully adjustable universal saddle with adjustable corner brakets and safety chain.
- Flash chromed rods inhibits rust from entering hydraulic system.
- Rugged welding construction prevents jack from leakage afther collisn and / or deformation.
- Foot operated hydraulic stages allow for precise load control as well as rapid lifting abilities.
- Wide base with four 3" dia. Swivel casters provide stability and easy maneuvering.

**Picture shown are for reference only*